



2nd World Forum on Urban Forests

Washington DC, 2023

Digging into Tree Equity Score

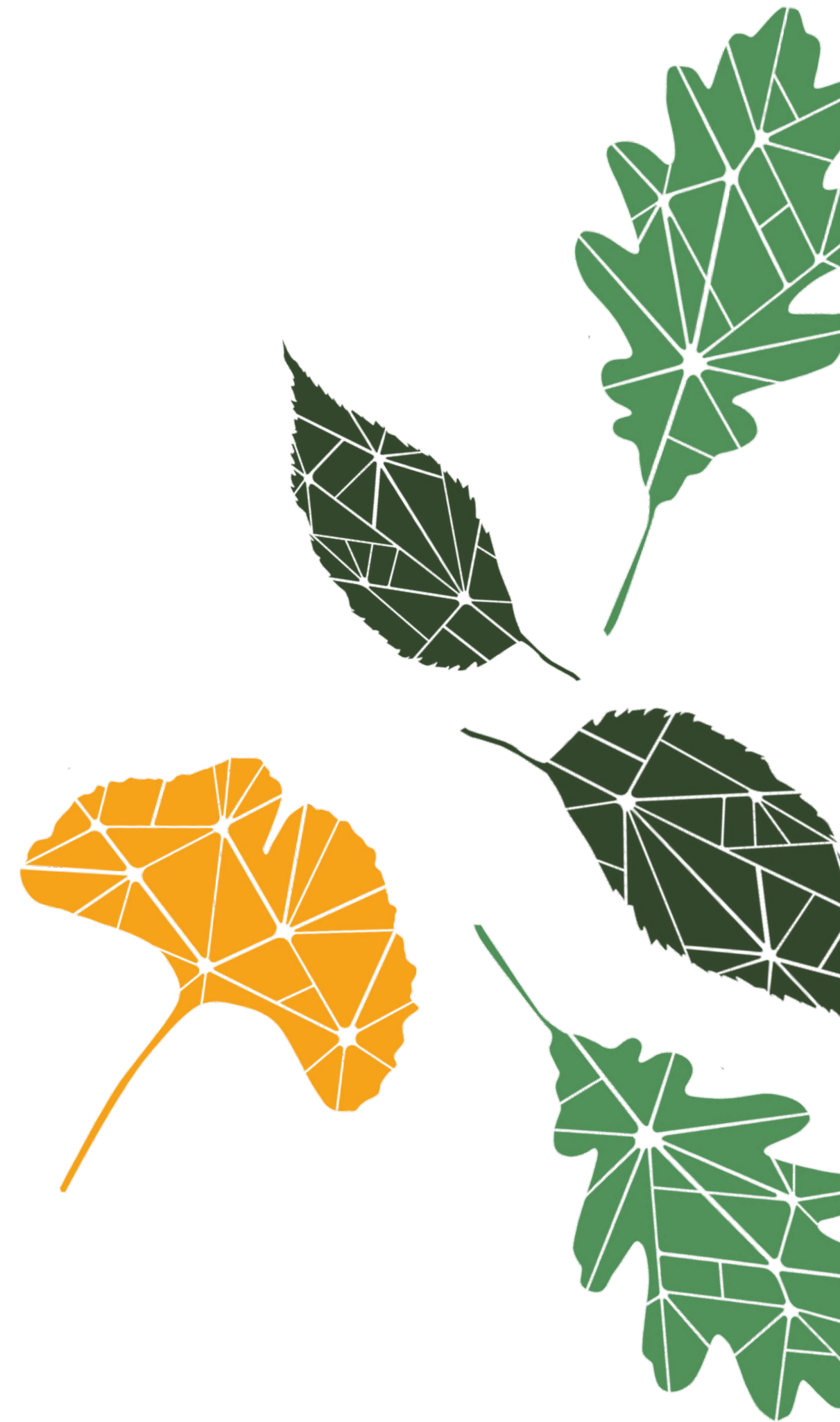


Presented by

American Forests

Chris David, Vice President of GIS & Data Science

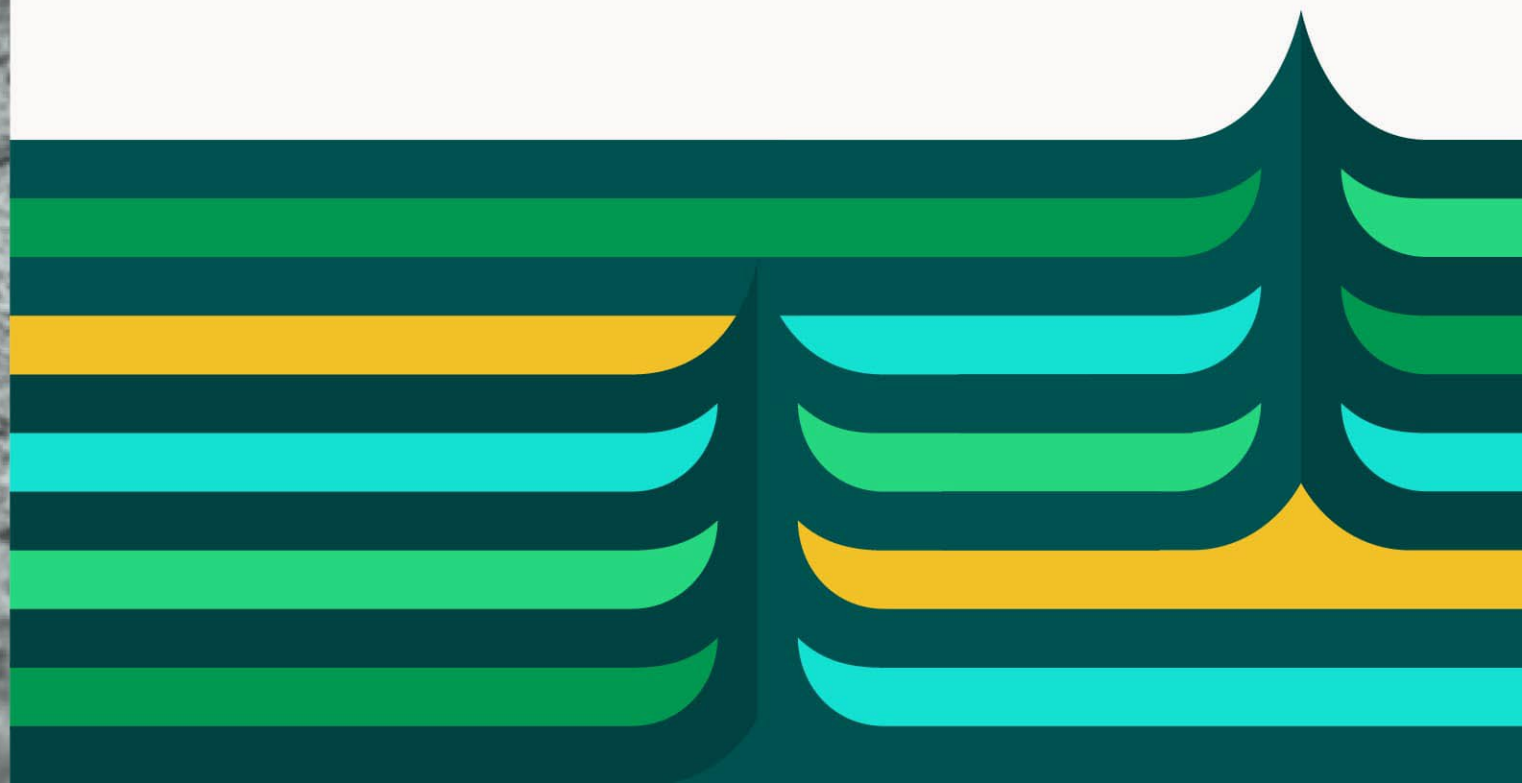
Mushtaq Ali, Senior Manager, GIS & Data Science





American Forests is the
oldest national nonprofit
conservation organization in
the United States.

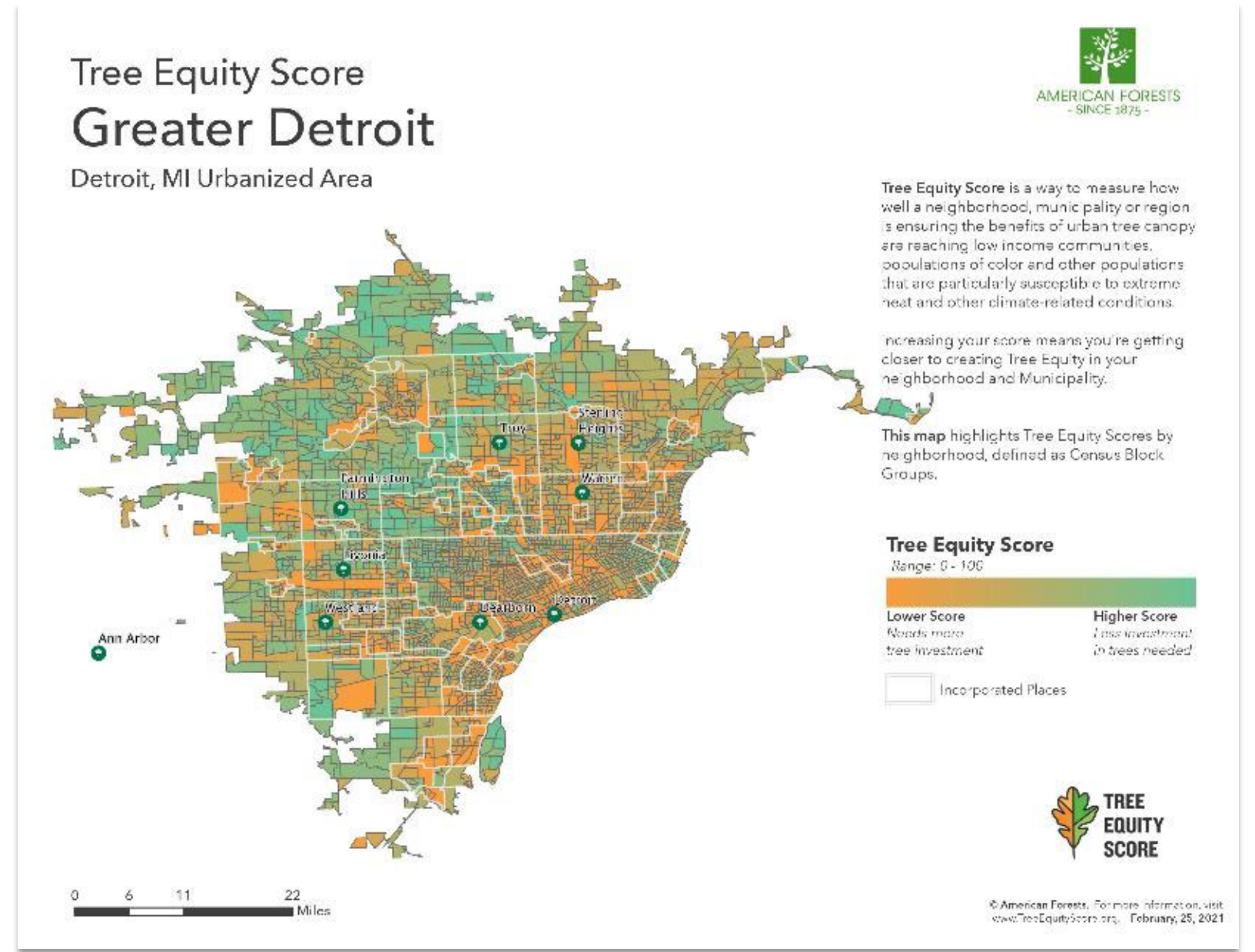
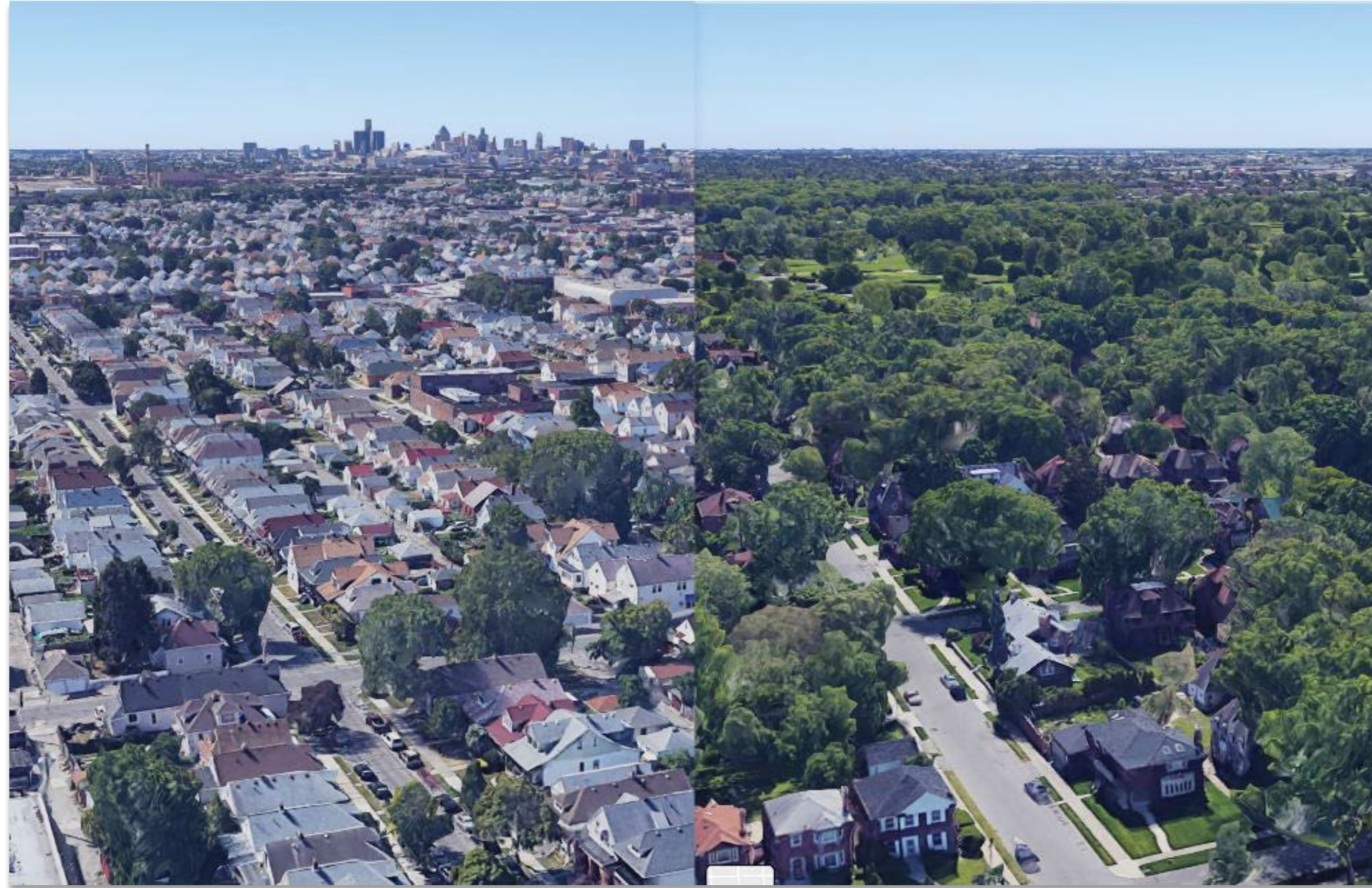
Our Roots Run Deep





2nd World Forum on Urban Forests

Washington DC, 2023



We Need Tree Equity in Cities



2nd World Forum on Urban Forests

Washington DC, 2023

- 2023 was the **hottest** summer on record
- **9 times** more heat-related deaths annually by 2100, mostly in cities



Visualization: [NASA](#);
Mortality Projections:
Duke University





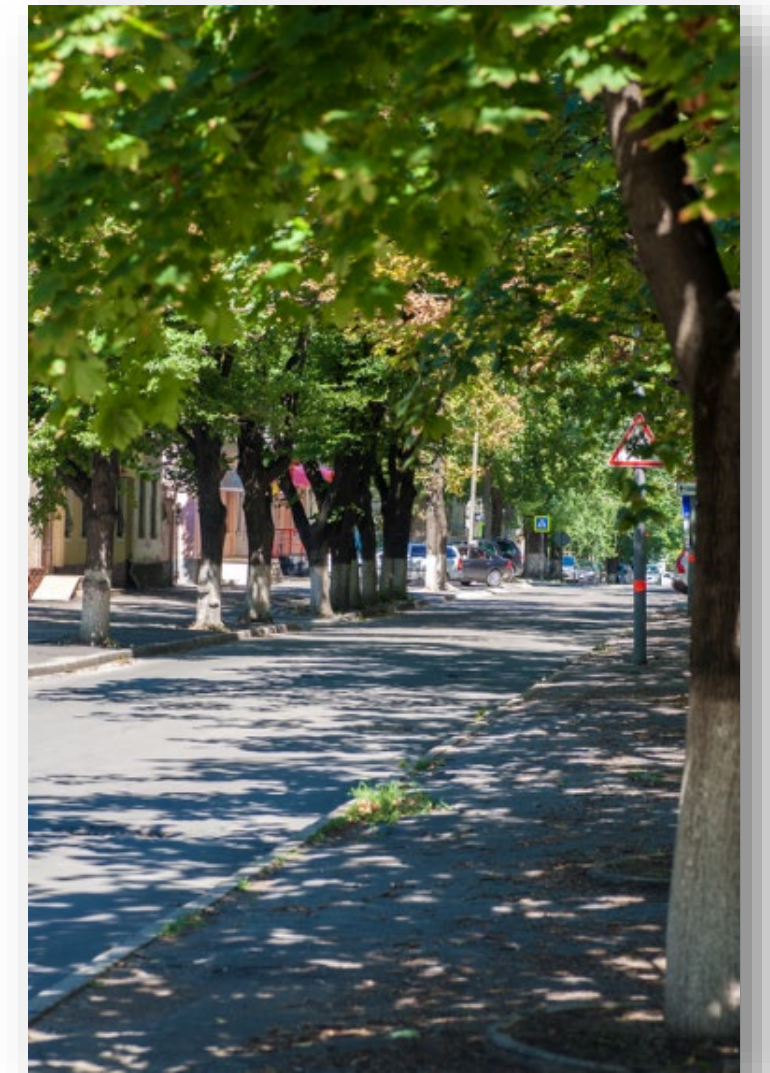
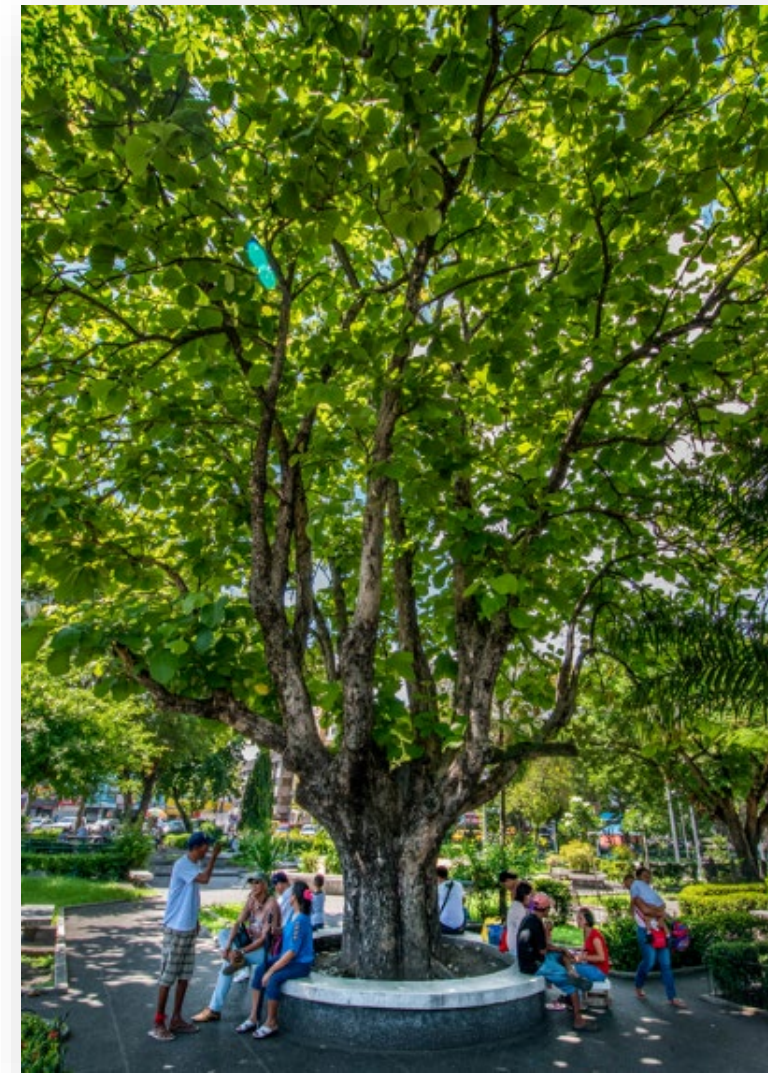
Heat Risk: Lower temperatures by up to 10 degrees F at street level

Air Quality: Avoid millions incidents of respiratory illness annually



Sequestration: 129M Mt/CO₂e

Energy Savings: 7.2% average reduction in home heating & cooling, saving homeowners \$\$\$\$

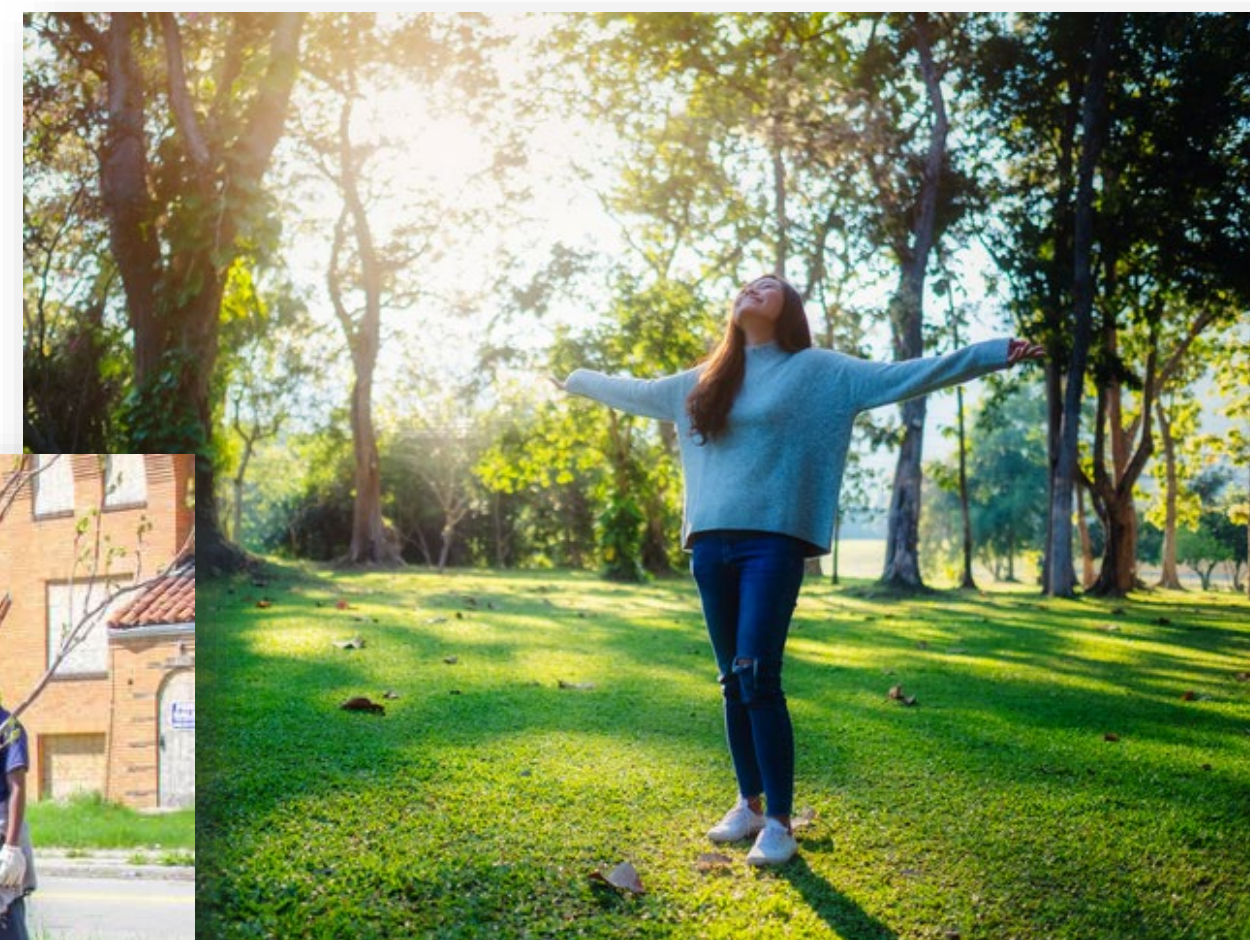


Tree Equity = Climate Action



More time in natural environments leads to:

- Better overall health and well-being
- Reduced stress
- Enhanced social skills

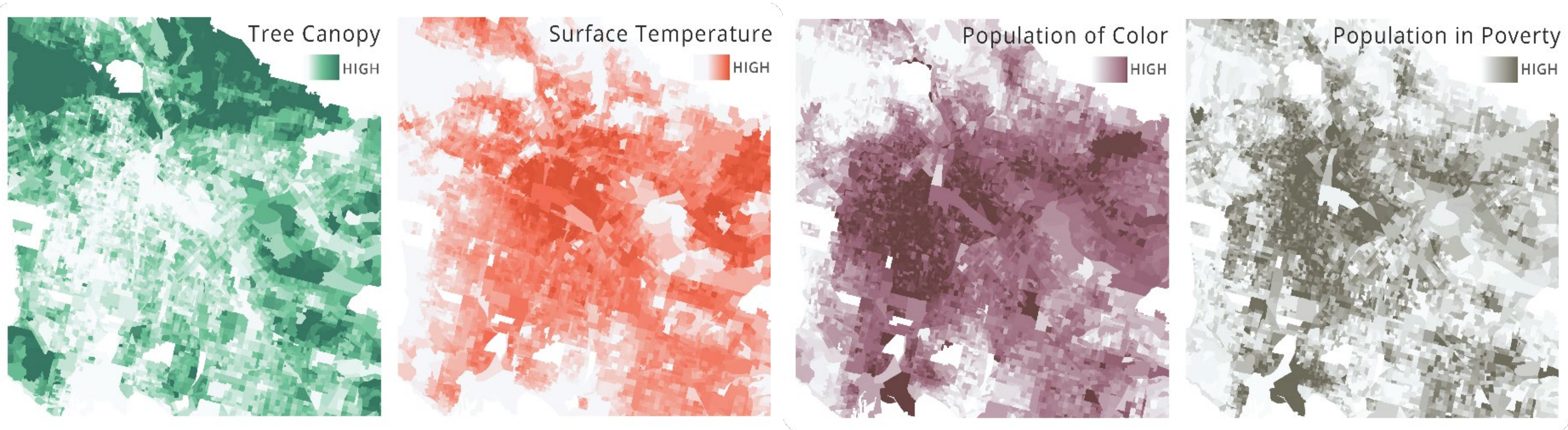


Tree Equity = Health Equity

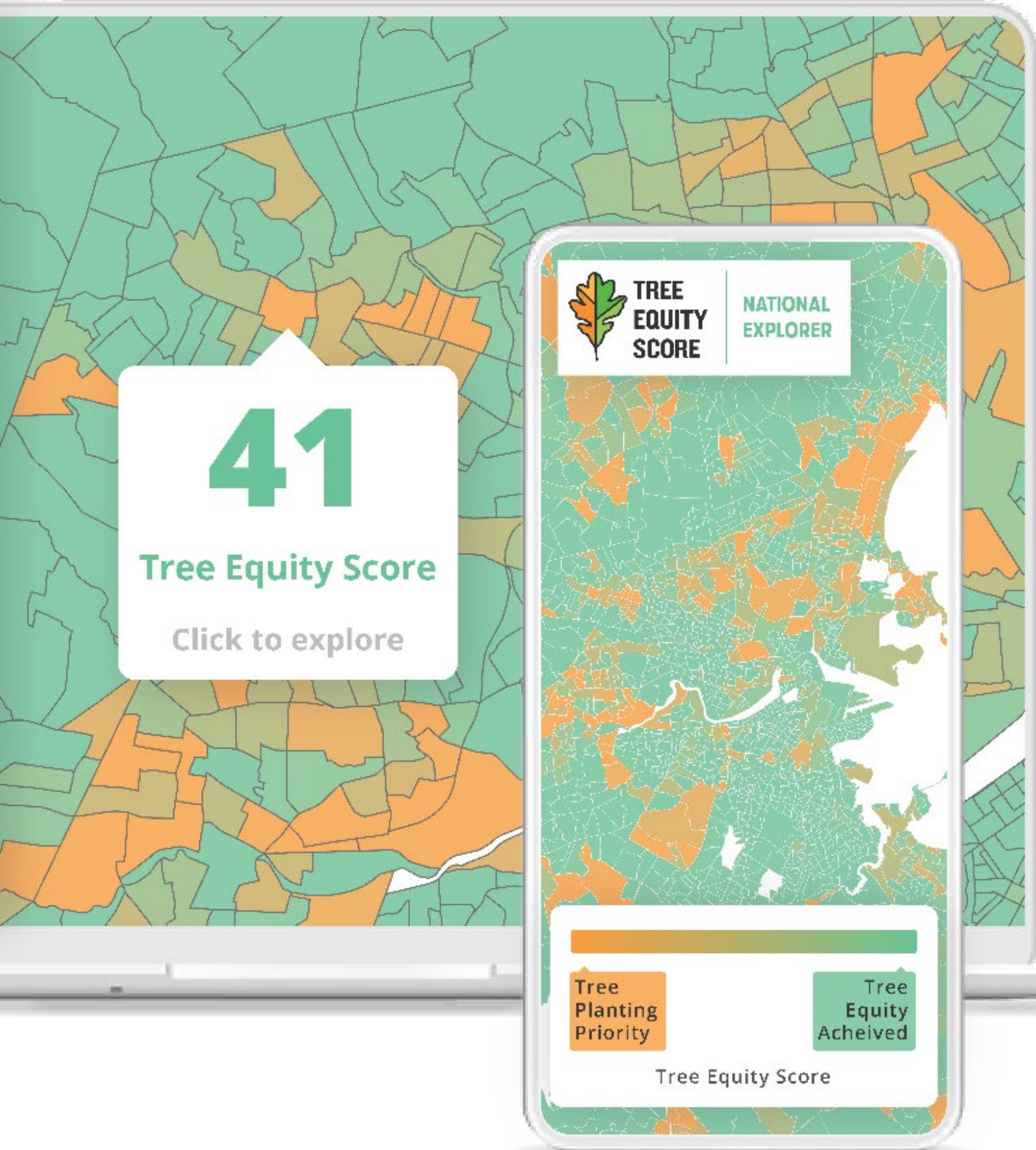




What is Tree Inequity?



Tree Equity is about ensuring that all people experience the health, economic and other benefits that trees provide.



Tree Equity Score offers a course of action to advance Tree Equity in urban communities nationwide to make cities more inclusive, safe, resilient and sustainable.

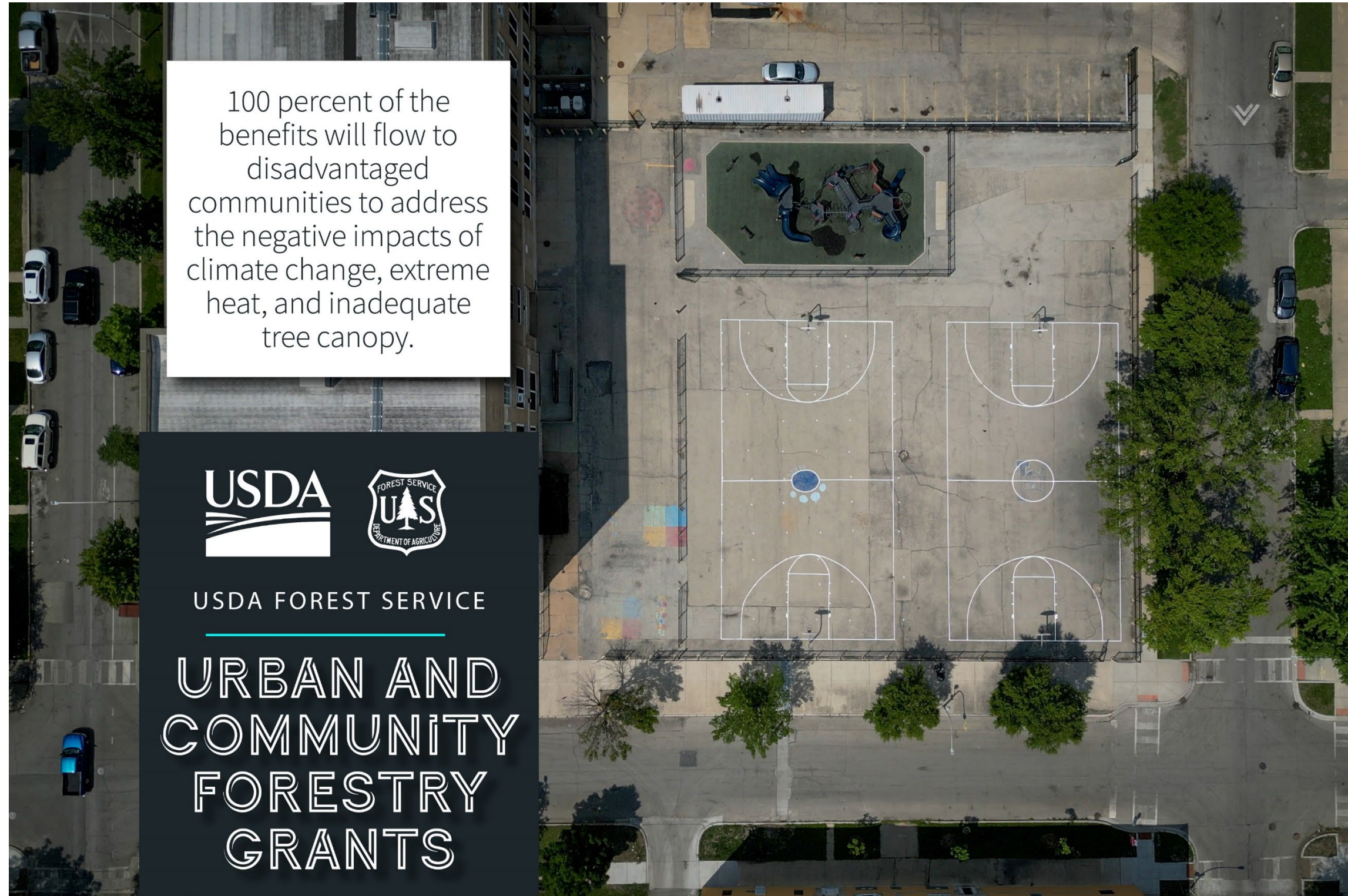
The score sets a national standard to assess how well cities are delivering tree canopy to all residents and to help make the case for investment in areas with the greatest need.

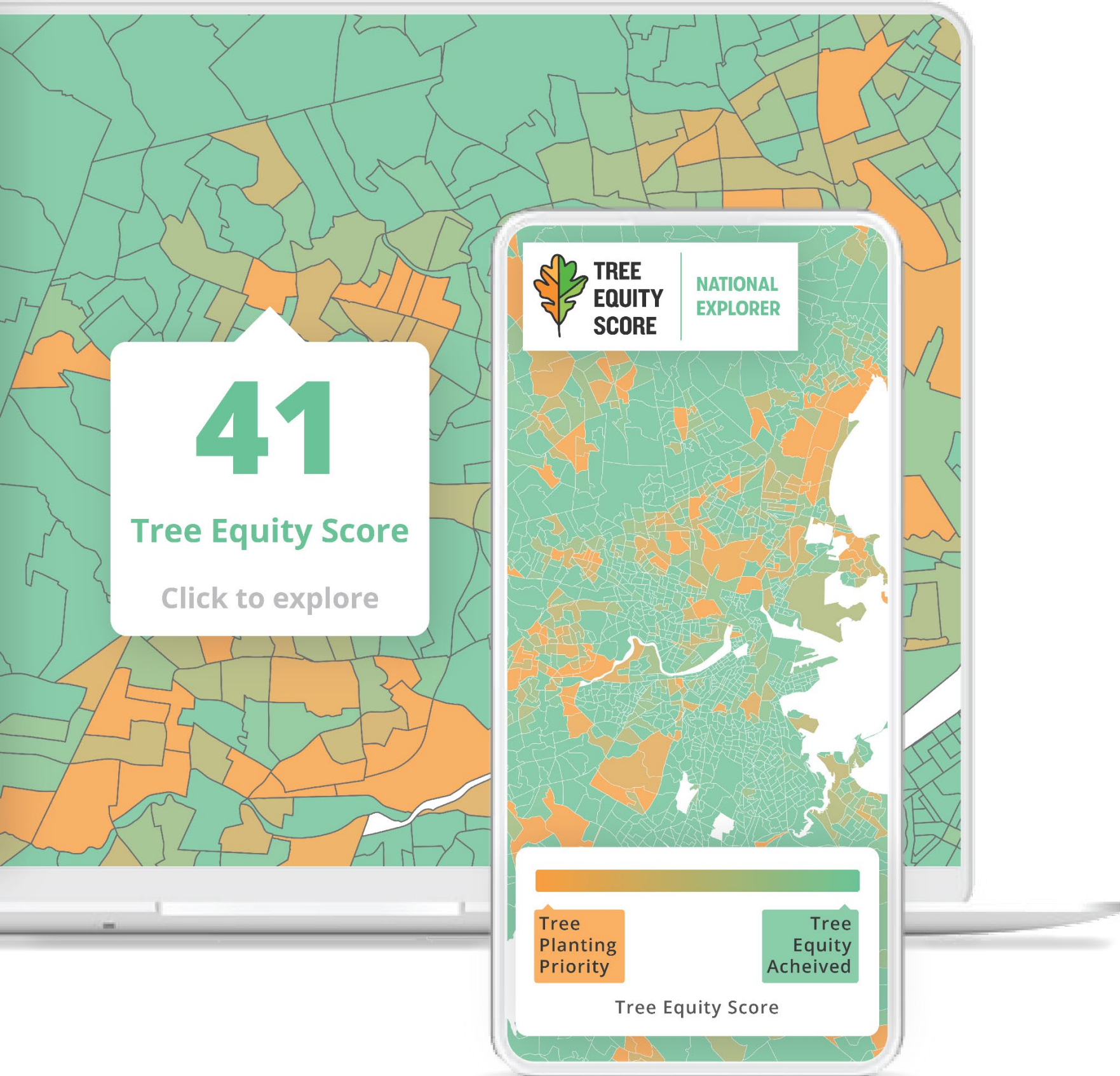


HISTORIC Impact

Catalyzed Investment for Tree Equity

- **\$1.5 Billion** (with a B!) for Tree Equity through the Inflation Reduction Act
- Increased awareness from corporate donors and foundations = more money in communities for TREES
- Cities and states taking charge by formally incorporating Tree Equity into local policy
- Power to the people through Democratized Data





The Score

Tree Equity Score highlights inequitable access to trees. It measures how well a neighborhood or municipality provides the benefits of urban tree canopy to low-income communities, populations of color and other populations that are particularly susceptible to extreme heat and other conditions.

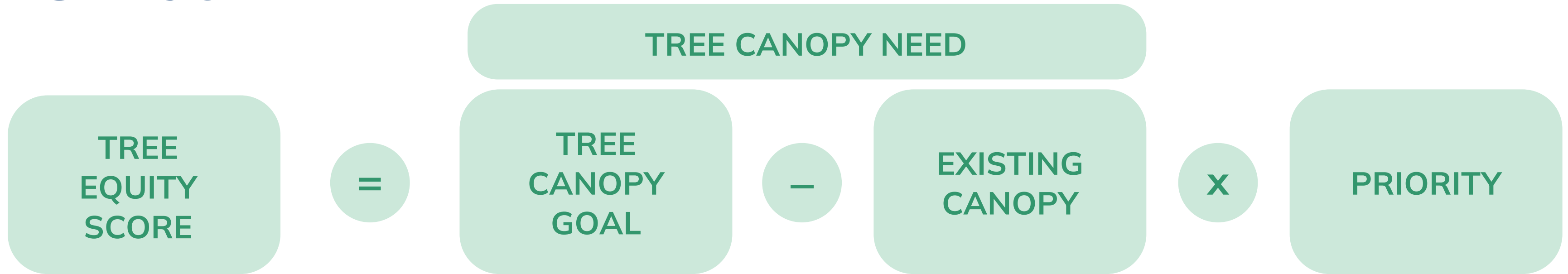
**190,000 urban neighborhoods
in 12,000+ cities and towns**



The lower the score, the greater priority for tree planting.
A score of 100 means the neighborhood has met tree planting goals.

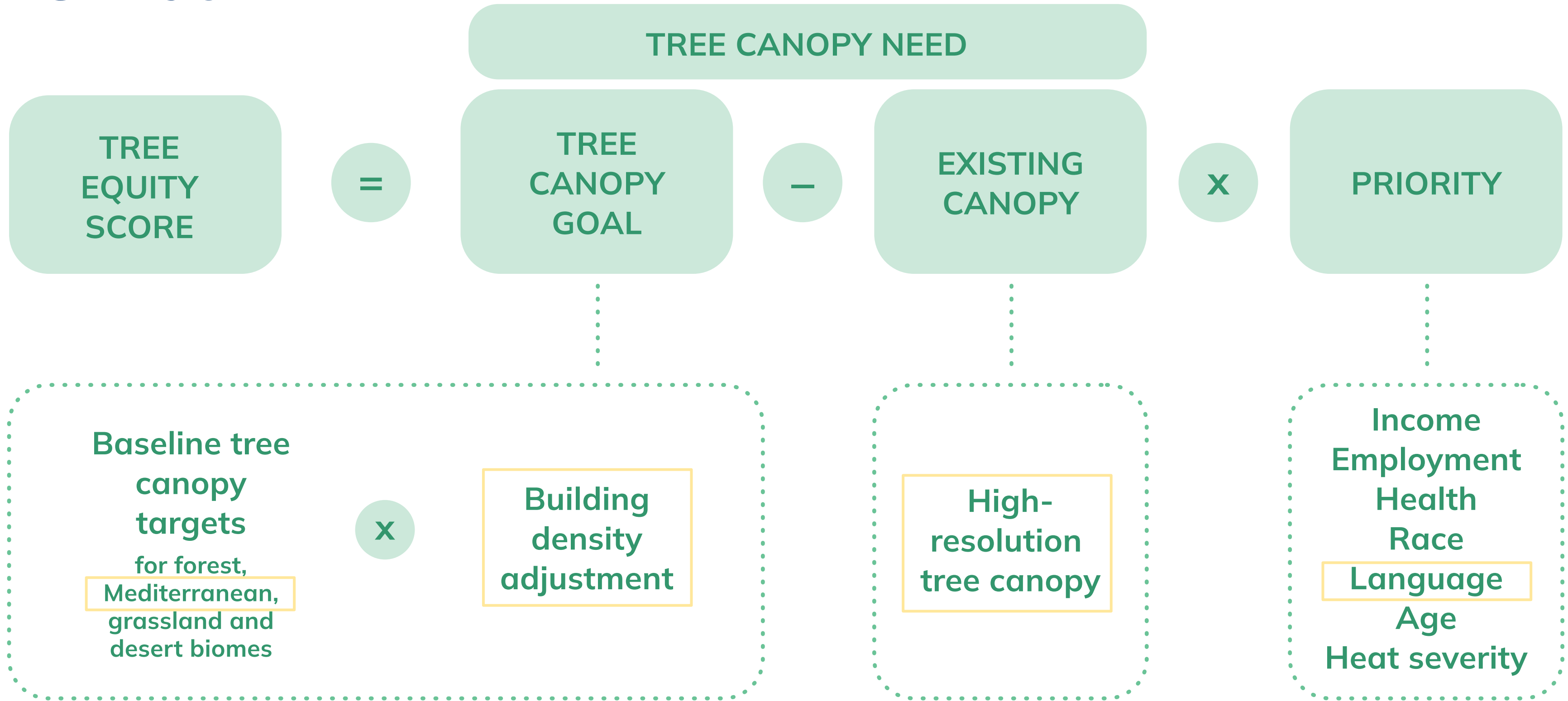


The Math





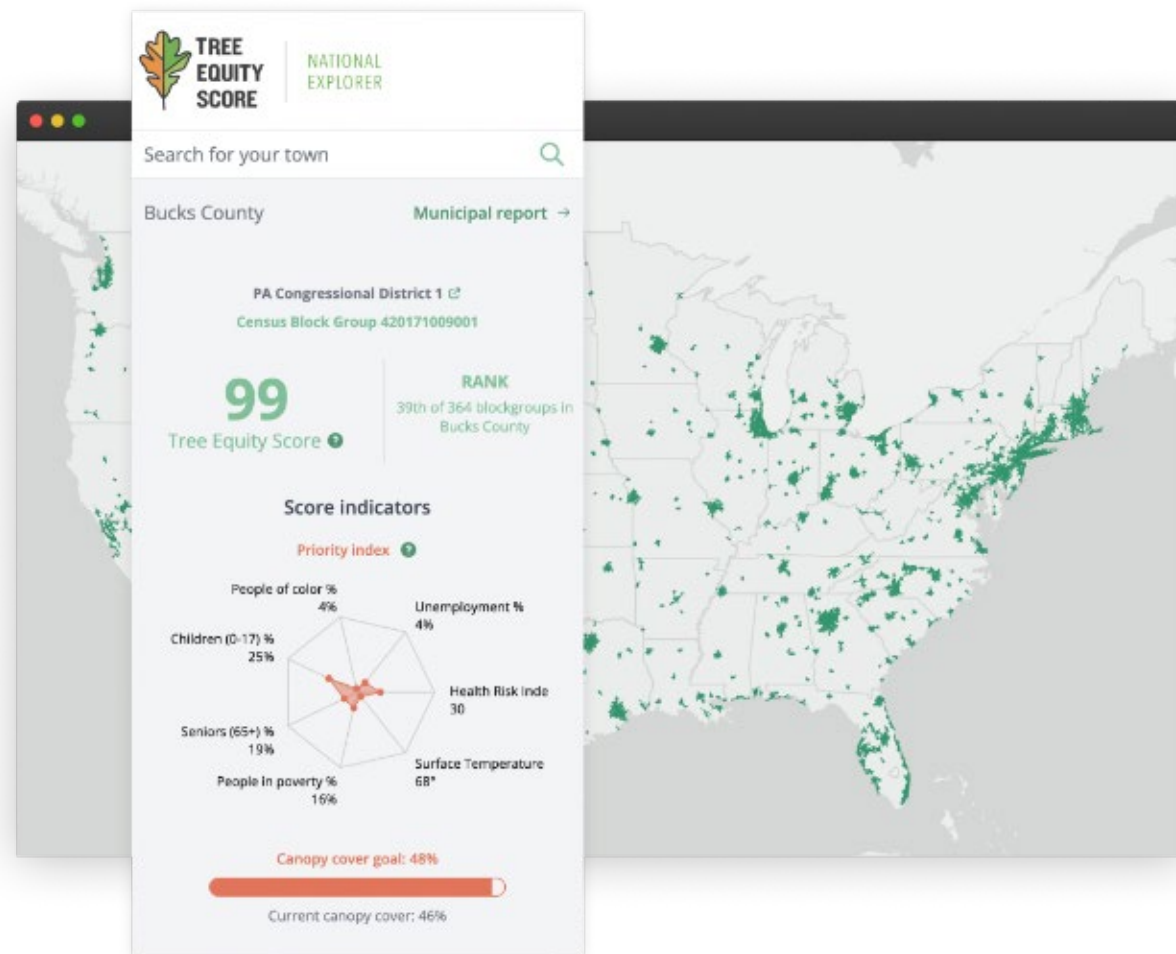
The Math





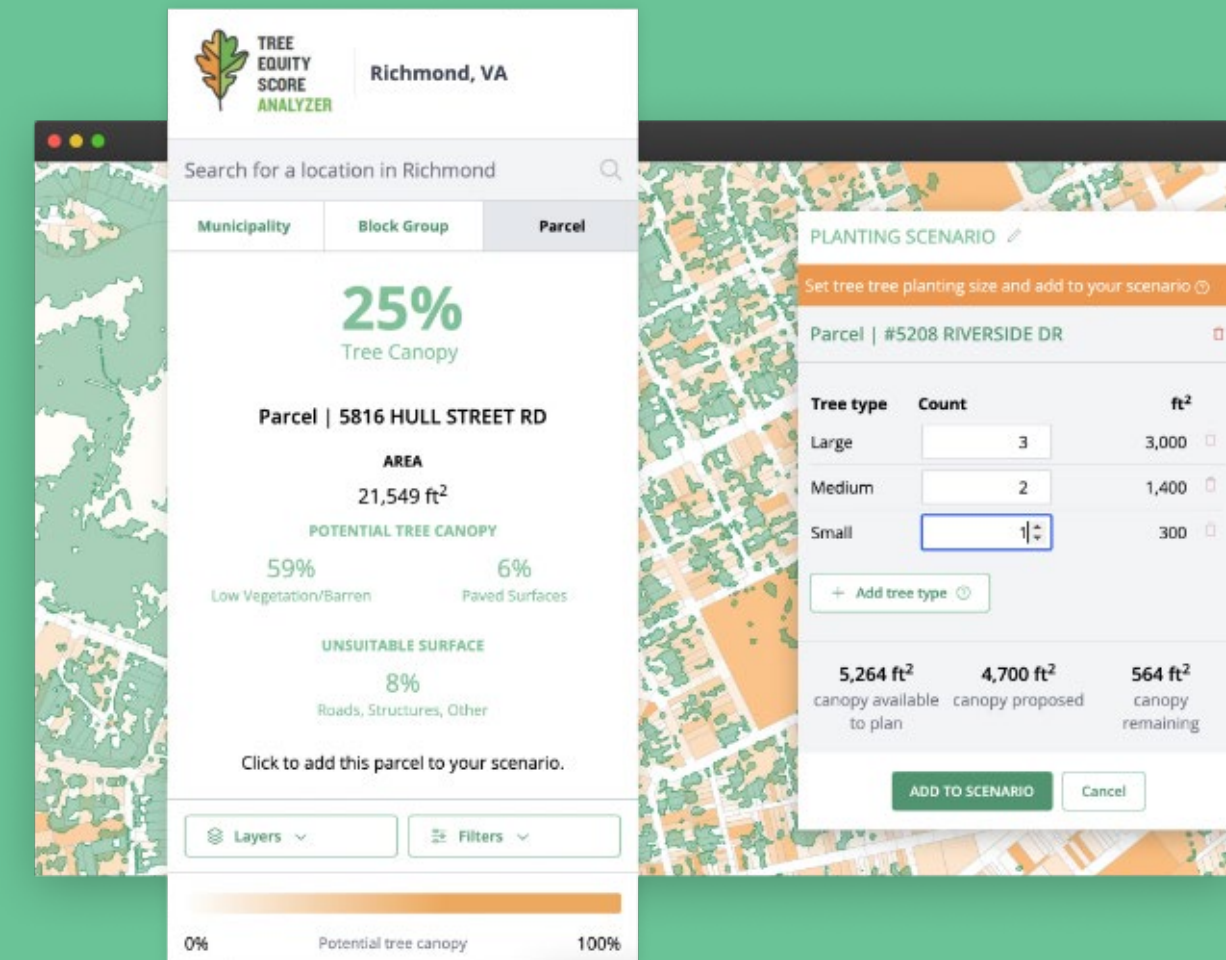
2nd World Forum on Urban Forests

Washington DC, 2023



Our flagship National Explorer makes Tree Equity Score available to all.

- Scores for 190,000+ urban block groups in the
- A national standard to support equity-first tree planting and investment.
- Neighborhood-level data; municipal and regional goal-setting.
- Communicate the positive impacts of trees.



Local Analyzers serve a single city or region to help users *shift* Tree Equity Scores.

- Data for all public and private properties.
- For each block group (neighborhood), set Tree Equity Score goals and estimate planting needs.
- Build property-level plans to shift scores. Track progress. Communicate the benefits of new and existing trees.
- Co-created with stakeholders; locally-tailored.

What's Next?

CONTINUOUS Improvement

- Annual data updates
- Regular review of new technology and data advancements
- Feedback from users incorporated into out update roadmap
- Data stories linking our Tree Equity Score data to the experiences people are having in communities

DEEP DIVE TREE EQUITY SCORE **ANALYZERS**

Live

- Rhode Island
- Richmond, VA
- Boston, MA
- Ruston, LA
- Washington, D.C.

In Beta

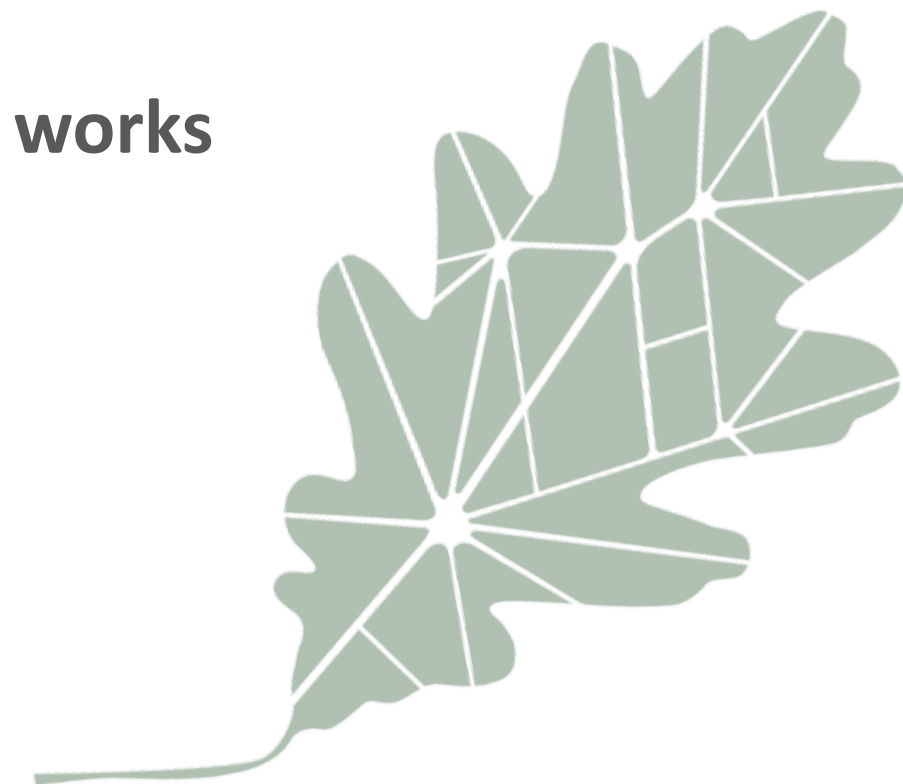
- Austin, TX
- Dallas, TX
- Phoenix, AZ
- Detroit, MI
- Indianapolis, IN

In Development

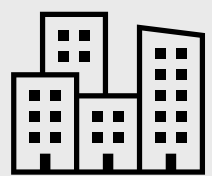
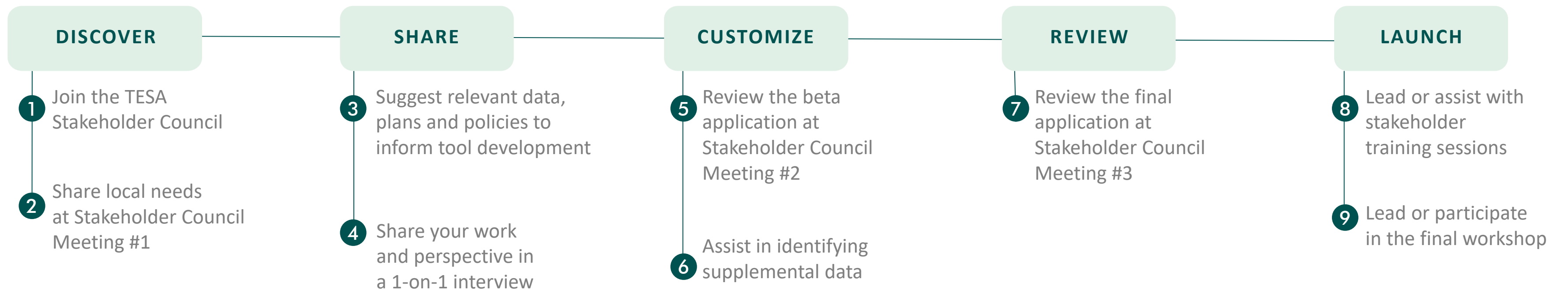
- Houston, TX
- Columbus, OH
- Toronto, Ontario
- Washington State

NEW TREE EQUITY SCORE Tools in the works

- Tree Equity Score UK Explorer
- Tree Equity Support/Action Center
- Tree Equity Score Dashboard



Every Explorer/Analyzer is co-created with a Stakeholder Council



Local
Government
Officials



Environmental
Justice
Organizations



Public Health
Officials



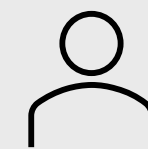
Environmental
Organizations



Housing, climate,
transportation, and other
urban forestry allies



Tree Care
Industry
Professionals



Advocates/
Community
Leaders



Social Justice
Organizations



DEMO

<https://treeequityscore.org/>





Tree Equity Score in the Field

Lora Martens, City of Phoenix

Lawrence Sobson, Michigan DNR

Mona Cummings, Tree Fresno

David Meshoulam / Josh Reed, Speak for the Trees





Interactive Exercise

<https://treeequityscore.org/>

1. Use the search bar to identify an address of your choosing.
2. Explore components of the score for your neighborhood.
3. Open a city, county, district or state report from the “Dynamic Reports” menu
4. Explore the data in the report. Use the slider to identify the number of trees needed to achieve a target score.

Q: What insights did you uncover? How might you be able to use this information in your work?





Discussion

- What are the barriers to getting more trees in the ground where you live?
- How might you use Tree Equity Score in your part of the world?
- What's missing? How can it be improved?





Thank you

Chris David & Mushtaq Ali | American Forests

✉ **cdavid@ americanforests.org**

✉ **mali@ americanforests.org**



Food and Agriculture
Organization of the
United Nations



Arbor Day
Foundation



POLITECNICO
MILANO 1863



International Society of Arboriculture



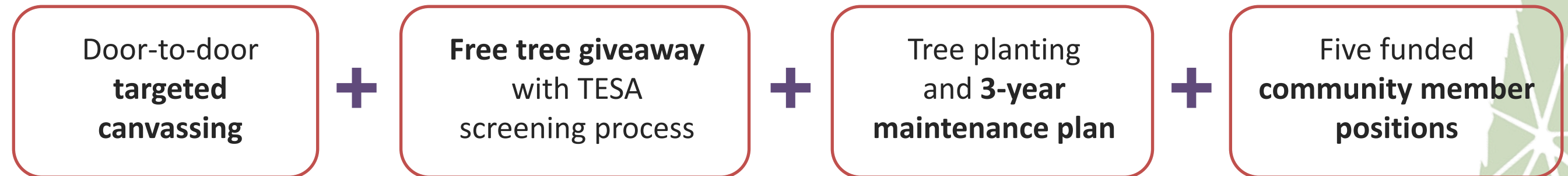
Smithsonian



FOREST SERVICE
U.S. DEPARTMENT OF AGRICULTURE



Resident-led Tree Planting in Pawtucket and Central Falls, Rhode Island



Groundwork RI was awarded **\$143,000** to plant trees on public and private property in Pawtucket and Central Falls

“We called everyone who had the lowest [tree equity] scores first and gave them priority to getting a tree planted.” -- Groundworks Coordinator



Statewide, **Rhode Island** has leveraged over **\$1 million** in additional external funding since TESA Rhode Island's launch in late 2020.

Tree Equity Score is now being used as the standard for evaluating federal dollars.



CEUs

How to make the Most of Tree Equity Score



PP-23-3588



World Forum on
Urban Forests